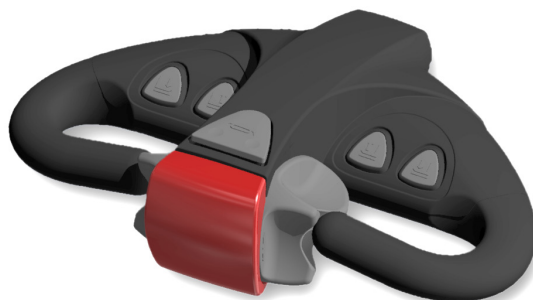


REMA TILLER HANDLE MOD1



Universal tiller handle for industrial trucks of different types and applications

The proven REMA tiller handle MOD1 is designed as a cost effective model for industrial trucks.

It comes complete with control functions for lift and lowering and speed control.

Ergonomically designed the horn, creep and travel buttons are located according to the latest ergonomic findings.

Its rugged design and its glass fiber reinforced housing ensure a long life.

Furthermore the MOD1 tiller handle is compatible with multiple motor controllers enabling it to communicate with different controllers.

GENERAL TECHNICAL DATA

> Weight	app. 1 kg
> Supply voltage	24 V DC nominally
> Voltage range	±25%
> Current consumption	< 50 mA, 24 V DC
> Communication	Can Bus or Analogue
> Throttle / Rocker switch	Hall Sensor

MATERIAL HOUSING

> Material	Glas-fiber reinforced polyamide (>PA6-GF20<)
> Color	black sim. RAL9005

ENVIRONMENTAL CONDITIONS

> Operating temperature	-20 °C ... +60 °C -4 °F ... +140 °F
> Storage temperature	-40 °C ... +60 °C -40 °F ... +140 °F
> Protection class	IP20 acc. DIN EN 60529

LIFE CYCLE

> Life cycle driving switch	7 Mio. actuations
> Life cycle rocker switch	3 Mio. actuations
> Life cycle push button	3 Mio. actuations
> Life cycle Belly	0,3 Mio. actuations